

Academic Office Building Annex Renovation Project



Brought to you by Limited Construction in correlation with Michigan Technological University.

Project Statement

- Limited Construction was contacted by MTU to engineer several design alternatives for the Academic Building Annex to create a more functional, circulation friendly design, and to incorporate new expectations of the Archaeology Department. This initial design has a preliminary budget of \$100,000.

History of the Building

- Designed by Wilfrid Polkinghorne, Civil Engineering Professor
- Constructed in 1936-37
- Annex designed for academic use & library storage.
- Basement housed ROTC rifle range.

Construction Alternatives

- Internal Staircase Remodeling
- External Staircase Construction with Electric Lift on West Side of Annex
- Exterior Elevator on West Side of Annex
- Interior Elevator in place of MTU Vault
- * *All alternatives include baseline rehabilitation.

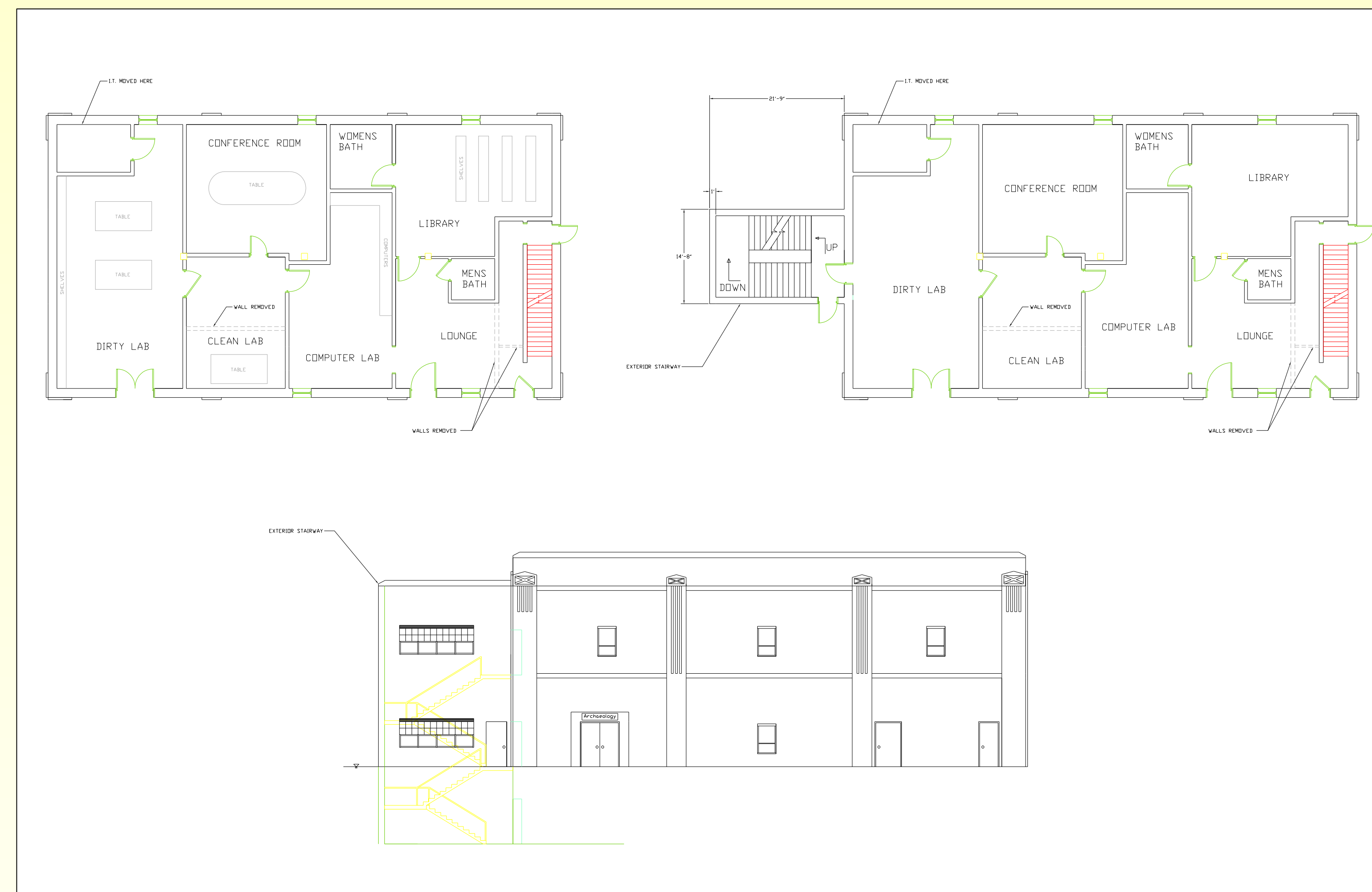
Cost Estimates for Rehab Alternatives

- Baseline = \$ 85,000
- Alternate 1 = \$ 212,000
- Alternate 2 = \$ 221,000
- Alternate 3 = \$ 288,000

Old / Current Annex Views



Proposed Annex Layouts



Building Code Issues

- Inadequate accordance with ADA policy i.e.. Circulation, Stairways, Restrooms, etc...
- Health Issues Asbestos Tile, Asbestos Pipe Insulation
- Proper HVAC for Archaeology Artifact Storage
- Future Demands on Electric and Fire Systems

Americans with Disabilities Act

- Non-Compliance issues: Accessibility, Circulation, Facilities
- Proposed Solutions: Automatic Doors, Elevator, Electric Lift, Handicap Accessible Facilities, and Stairway Design

Conclusion and Recommendation

- After creating several design alternatives keeping in mind the needs of the Archaeology Department it was Limited Construction's conclusion based on the budget constraint the best design plan was to rehabilitate the interior staircase and make general renovations to the Annex floor plan creating an improved circulation plan and a more functional floor plan layout.



LIMITED CONSTRUCTION INC.

"Our mission is to renovate, restore, and rejuvenate historical buildings so they can be utilized more effectively for the public's needs and desires."

Project Manager: Matt Gilbert

Team Members: Chris Bruning, Trevor Crawford, Jok Deng, Brett Krahn, & Lindsey Piche