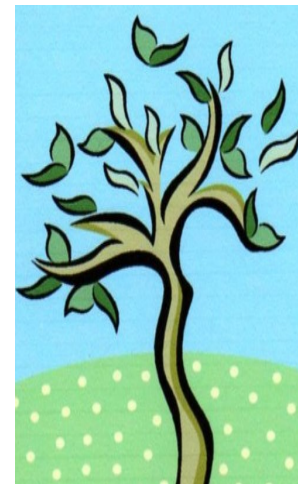




***Have A Sociable  
Summer!  
Track A and Track B  
Courses from the Department  
of Social Sciences***



**Track A: May 9 —June 23, 2011. All courses meet  
Monday—Thursday**

<b>Number</b>	<b>Title</b>	<b>Time</b>
<b>SS 2100</b>	<b>World Peoples and Environment</b> Introduction to anthropology and geography that focus on human diversity and the human Relationship to environment and resources	<b>9:35—10:50</b>
<b>SS 2500</b>	<b>The American Experience</b> A study of selected topics that explore the development of American culture and society. The Revolution to the Great Depression and beyond!	<b>8:05—9:20</b>
<b>SS 2600</b>	<b>American Government and Politics</b> Outlines the principles and logic of American Government and politics and explores contemporary issues in national and state government.	<b>11:05—12:20</b>
<b>SS 3210</b>	<b>Field Archaeology</b> Explore the method and theory of field based data recovery and interpretation, excavation and field lab methods will be explored—contact dept prior to registration. (lab fee)	<b>TBA</b>
<b>SS 3400</b>	<b>Contemporary Europe</b> Where and what is Europe the clash of nation states in World War II is becoming a confederation The European Union, yet Europe remains a place of distinct cultures and landscapes	<b>9:35—10:50</b>
<b>SS 3505</b>	<b>Military History of the USA</b> History of the American military and its place in American society in both peace and war from the colonial period until the present.	<b>9:35—10:50</b>
<b>SS 3510</b>	<b>History of American Technology</b> A survey of the technological changes that transformed a rural agrarian, American into a urban Industrialized nation	<b>8:05—9:20</b>
<b>SS 3541</b>	<b>The Copper Country</b> Is the Copper Country a distinct landscape, a local culture, or a memory of an industrial past, the historical events that give current meaning to this place are explored	<b>12:35—1:50</b>
<b>SS 3710</b>	<b>Social Problems</b> Examines the social construction of social problems and substantive problems confronting modern society, macro and micro social problems will be considered	<b>11:05—12:20</b>
<b>SS 3920</b>	<b>Experimental Archaeology</b> Most archaeology used recovered data, experimental archaeology generates data, when is this Appropriate, how is this done, students will also assist in a real experiment (lab fee)	<b>11:05—12:20</b>
<b>SS 3590</b>	<b>American Sports History</b> The relationship between sports, society and culture in American history are explored through time, place, and people	<b>9:35-10:50</b>

**More information about any of the SS Dept courses may be found at  
[www.social.mtu.edu](http://www.social.mtu.edu) or by calling 487-2113**

**Why Take Social Science Courses During the Summer?**

- 1. Courses are offered then that are not offered during the academic year**
- 2. The course enrollments tend to be lower allowing more individual attention**
- 3. Students may explore new areas without impacting their major's course schedule**
- 4. Its fun!**



***Have A Sociable  
Summer!  
Track A and Track B  
Courses from the Department of  
Social Sciences***



**Track B: June 27—August 11 2011. All courses meet Monday—Thursday \* (Study Abroad courses have a different schedule)**

<b>Number</b>	<b>Title</b>	<b>Time</b>
<b>SS 2100</b>	<b>World Peoples and Environment</b> Introduction to anthropology and geography that focus on human diversity and the human Relationship to environment and resources	<b>11:05—12:20</b>
<b>SS 2500</b>	<b>The American Experience</b> A study of selected topics that explore the development of American culture and society. The Revolution to the Great Depression and beyond!	<b>9:35—10:50</b>
<b>SS 3500</b>	<b>Modern American History</b> A Broad Survey of American history from World War II to the present	<b>12:35—1:25</b>
<b>SS 3512</b>	<b>Building America</b> This course surveys the landscapes and environments that Americans have designed, built, and inhabited. Students will consider how places both reflect and shape ideas, policy, technologies, and social relationships.	<b>9:35—10:50</b>
<b>SS 3530</b>	<b>The Automobile in America</b> Examines the automobile in diverse ways, seeing it as a complex product to be manufactured, as a stimulus to reshaping the environment, as an object that has altered social behavior, and as a problem solver and problem maker	<b>12:35—1:50</b>
<b>SS3940</b>	<b>World Affairs</b> The study of current issues and themes in world affairs and of significant world tension areas. Detailed examination of central issues in selected recent regional or international conflicts or high profile internal problems in selected countries.	<b>TBA</b>
<b>SS 3990</b>	<b>Finnish History and Culture</b>	<b>11:05 –12:20</b>
<b>Study Abroad</b>	<b>Frontiers and Fortresses</b> 4 weeks, 3 courses, 9 credits and a life-time of memories, hosted at the University of Cumbria The history and archaeology of the north of Britain will be studied (lab fee)	<b>* 07/6—08/04—England special times</b>

**More information about any of the SS Dept courses may be found at [www.social.mtu.edu](http://www.social.mtu.edu) or by calling 487-2113**

**Why Take Social Science Courses During the Summer?**

- 1. Courses are offered then that are not offered during the academic year**
- 2. The course enrollments tend to be lower allowing more individual attention**
- 3. Students may explore new areas without impacting their major's course schedule**
- 4. Its fun!**